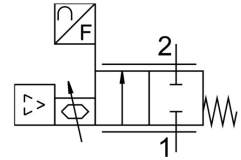


Proportional flow control valve VEMD-L-6-14-20-D21-M5-1-R1-V4

FESTO

Part number: 8086472



Data sheet

Feature	Value
Type code	VEMD
Symbol	00995693
Degree of protection	IP40
Note on degree of protection	IP51 for horizontal installation
Flow rate control range	0 l/min ... 20 l/min
Note on the flow rate control range	The specified flow control range only applies at room temperature. Above room temperature, a reduction of the max. adjustable flow rate may occur.
Flow direction	Non-reversible
Operating pressure	0 bar ... 2.5 bar
Overload pressure	6 bar
Burst pressure	10 bar
Accuracy of flow rate	± (4% o.m.v. + 1.25% FS)
Repetition accuracy in ± %FS	1 %FS
Hysteresis in ± %FS	2.5 %FS
Linearity error FS	2 %
Temperature coefficient	0.1 %/K
Valve function	2-way proportional flow control valve
Nominal width	1.4 mm
Pneumatic connection 1	Internal thread M5
Pneumatic connection 2	Internal thread M5
Medium	Compressed air as per ISO 8573-1:2010 [6:4:4] Inert gas Oxygen (oxygen applications according to IEC 60601-1 only on request) Nitrogen
Information on medium	Operation with oil lubrication not possible
Special features	Oxygen-compatible as per DIN EN 1797
Ambient conditions	Not suitable for use in environments enriched with oxygen according to IEC 60601-1
Duty cycle	100%
Temperature of medium	5 °C ... 40 °C
Ambient temperature	0 °C ... 50 °C
Storage temperature	-20 °C ... 70 °C
Nominal operating voltage DC	24 V
DC operating voltage range	22 V ... 26.4 V
Max. current consumption	40 mA
Max. electrical power consumption	1 W

Feature	Value
Electrical connection	4-pin M8x1 Plug as per EN 60947-5-2
Reference value	0.2 - 10 V
Analog input signal range	0.2 - 10 V
Analog output signal range	0.2 - 10 V
Reverse polarity protection	for operating voltage connections
Product weight	92 g
Seals material	EPDM NBR
Cover material	PA-reinforced
Note on materials	Contains paint-wetting impairment substances RoHS-compliant
Dimensions W x L x H	37 mm x 70 mm x 31 mm
Type of mounting	Direct fastening via thread
Mounting position	Any
Certification	RCM compliance mark
CE marking (see declaration of conformity)	As per EU EMC directive